



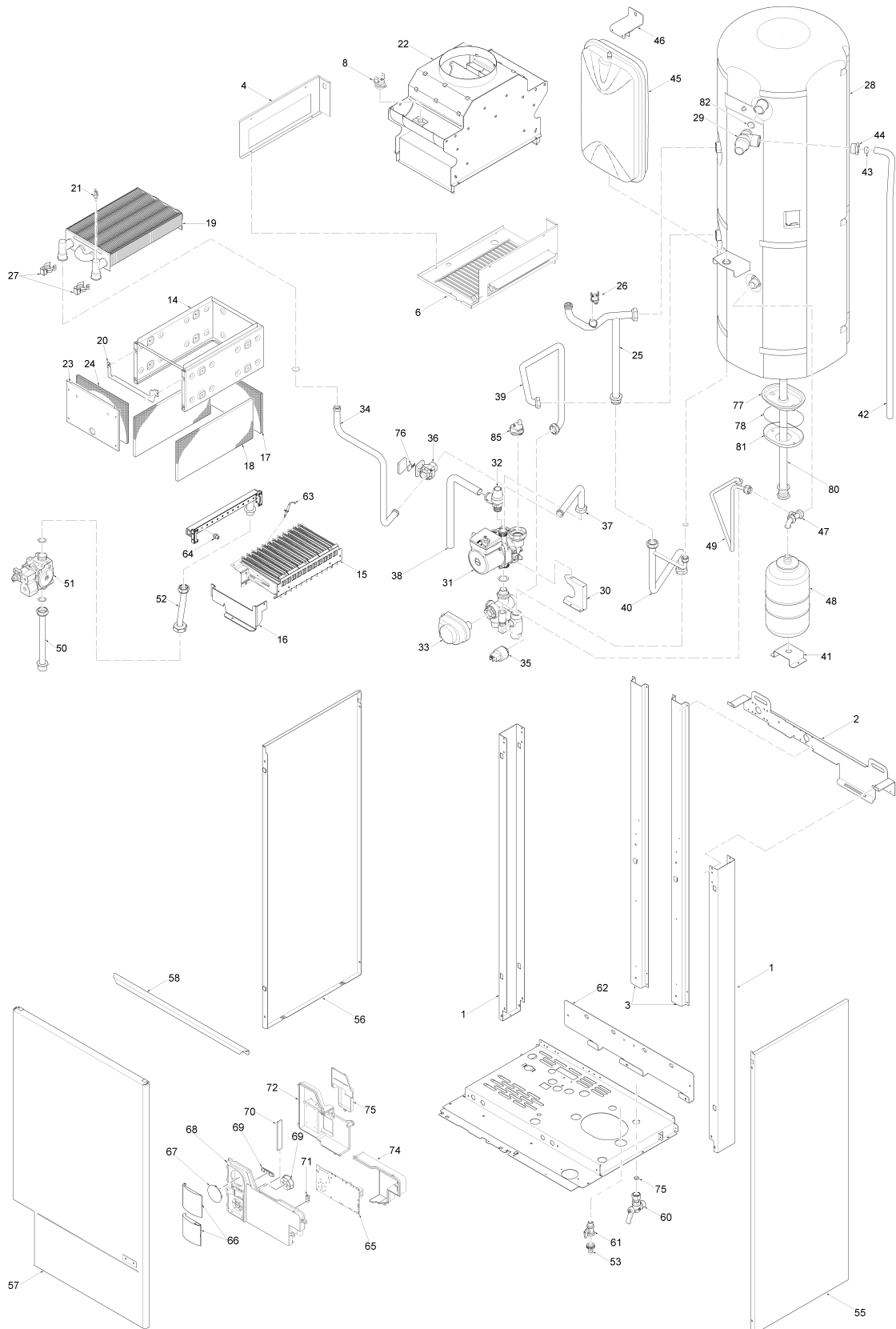
Fonderie Sime S.p.A. - Via Garbo, 27 - 37045 Legnago (VR) - www.sime.it
 Tribunale Verona 13531 - R.E.A. VR 171357 - C.C.P. 19423375 - N° Mecc. VR 014435
 Capitale Sociale Euro 5.521.200 int. versato - Codice Fiscale/Partita IVA n. IT 01275930236

Comfort Ambiente - Via Garbo, 27 - 37045 Legnago (VR)

Tel +39 0442 631111 - Fax Servizio Commerciale: Italia +39 0442 631291 - Estero +39 0442 631293

Fax Servizio Tecnico +39 0442 631292 - Fax Ufficio Acquisti +39 0442 631292 - Fax Amministrazione +39 0442 631336

8106660 CALD.MUR.MET.MUREL.EV 25/55 OF



Posiz.	Codice	Descrizione
001	6138558	Right/left hand side frame part

002	6138711	Frame assembly upper support
003	6256714	Sealed chamber rear support
004	6288471	Combust.chamber left upper supp
005	6257521	Combustion chamber lower air de
006	6288470	Combustion chamber plate suppor
008	6146711	Limit stat 80°C
014	6213608	Combustion chamber
015	5190700	Main burner assembly
016	6293002	Burner fixing bracket
017	6139727	Combustion chamber rear insulat
018	6139729	Combustion chamber side insulat
019	6174255	Heat exchanger
020	6293003	Exchanger fixing bracket
021	6231351	Plunged sensor
022	5167570	Smoke chamber assembly
023	6229008	Combustion chamber front panel
024	6139795	Combustion chamber front insula
025	6265106	Heat exchanger outlet pipe
026	6146701	100°C safety stat
027	6226601	Spring for heat exchanger conne
028	5194303	Insulated stainless steel tank
029	6029000	Pressure relief valve 1/2" - 7
030	6073318	Circulating pump fixing bracket
031	6124818	Circulating pump 15-60
032	6040209	Pressure relief valve
033	6087304	Motor for Honeywell diverting v
034	6215641	C.H. return pipe
035	6273603	Water press.transd. HUBA CONTR
036	6149303	Flow water switch
037	6215642	Connection pipe flow water swit
038	6157634	Pressure relief valve drain pip
039	6194806	D.H.W. tank outlet pipe
040	6216235	C.H. flow pipe
041	6073312	Expansion vessel support
042	6157632	Pressure relief valve drain pip
043	6100202	Ogive for pipe Ø 15
044	6168401	Locking nut for pipe Ø 15
045	5183722	Rectang. expansion vessel 10 l.
046	6267109	D.H.W. expans. vessel locking b
047	6227682	Pipe connecting D.H.W. expans.
048	6245102	Sanitary D.H.W. tank - 2.5 L.
049	6199212	Boiler feeding loop
050	6226878	Gas inlet pipe
051	6243827	SIT gas valve type 845 SIGMA
052	6226954	Pipe between gas valve-burner a
053	6179200	Holder complete with locking nu
055	6242117	Casing right hand side panel
056	6242217	Casing left hand side panel
057	6304232	Casing front panel
058	6072420	Front panel fixing
060	6177514	Ball cock 1/2" M - 1/2" F
061	6179100	Drain cock 3/8"
062	6215211	Hanging bracket
063	6235931	Ignition-ionisation electrode
064	6296100	Main burner nozzle NP 130 natur
064A	6154410	Main burner nozzle NP 77 GLP
065	6301407	Main PCB
066	6304890	Flap door assembly
067	6247327	Cap for time programmer
068	6304700	Control panel
069	6305120	Kit Rubber button
070	6305160	Guidelight with led
071	2211610	Earth faston
072	6305000	Cover
073	6305020	Time programmer cover
074	6305010	connection cover
075	6281401	Water rate adjuster 12 l/min
076	6131401	Microswitch for flowmeter
077	6258311	D.H.W. cylinder flange
078	6052705	Gasket for D.H.W. cylinder flan
080	6072708	Magnesium anode + plug 3/4" + O
081	6258312	D.H.W. cylinder counterflange
085	6013181	Automatic air vent
700	5197001	Brass hydraulic group
701	5197250	Complete control panel
702	6231330	Temperature sensor L=1120
703	6269813	Ignition cable

704	6316200	Connector 2 poli CN5
705	6316263	Connector 4 poli
706	6316235	9 pole cable connector
707	6316237	14 pole cable connector
708	6316238	4 pole cable connector
709	6316236	9 pole cable connector
710	6281534	Gaskets kit
711	5144712	Conversion kit to LPG