



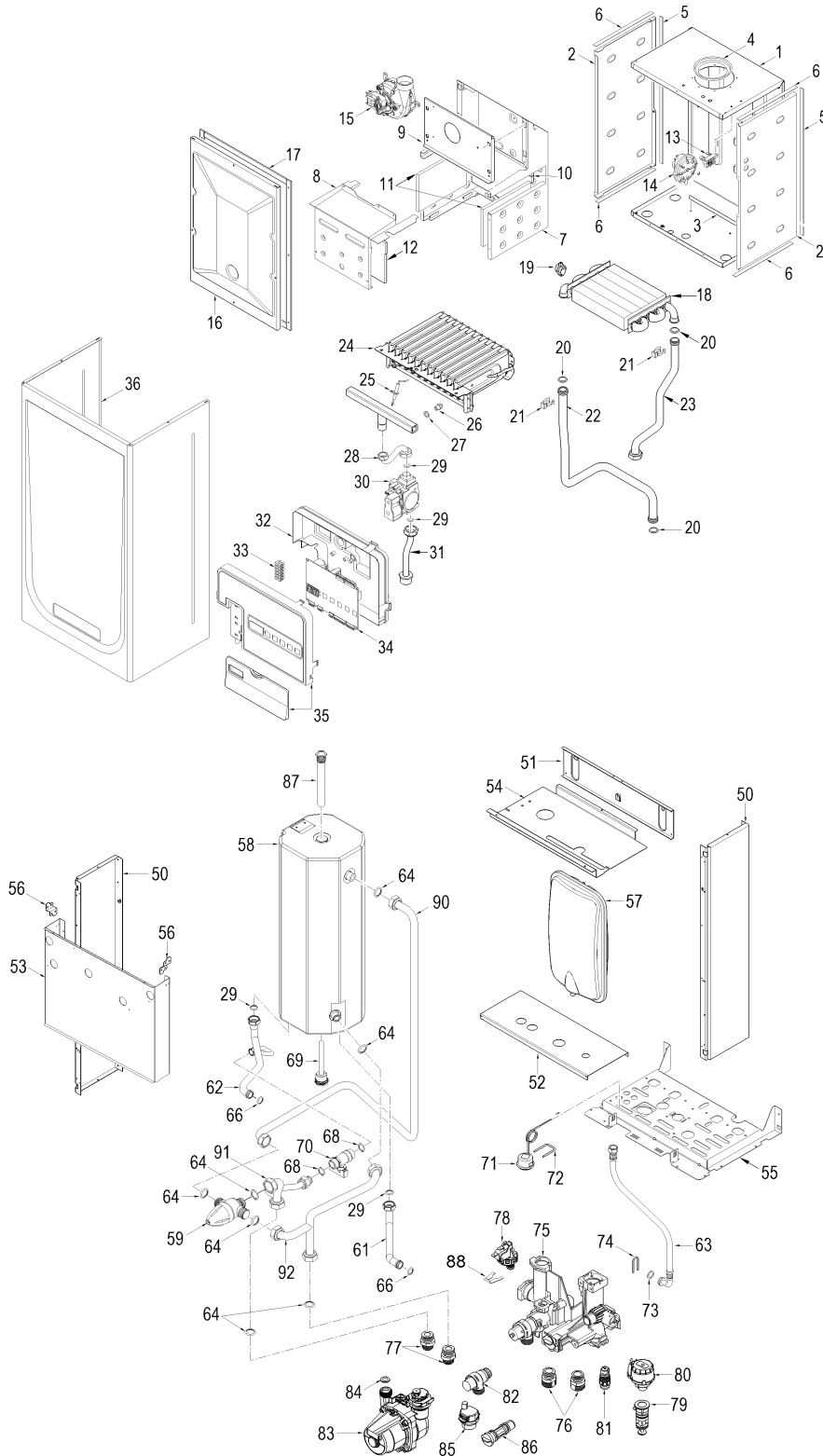
Fonderie Sime S.p.A. - Via Garbo, 27 - 37045 Legnago (VR) - www.sime.it
 Tribunale Verona 13531 - R.E.A. VR 171357 - C.C.P. 19423375 - N° Mecc. VR 014435
 Capitale Sociale Euro 5.521.200 int. versato - Codice Fiscale/Partita IVA n. IT 01275930236

Comfort Ambiente - Via Garbo, 27 - 37045 Legnago (VR)

Tel +39 0442 631111 - Fax Servizio Commerciale: Italia +39 0442 631291 - Estero +39 0442 631293

Fax Servizio Tecnico +39 0442 631292 - Fax Ufficio Acquisti +39 0442 631292 - Fax Amministrazione +39 0442 631336

8109260 CALD.MET. FORMAT DGT 25/15 BF



Posiz.	Codice	Descrizione
001	6317600	Sealed chamber rear panel
002	6288210	Sealed chamber side panel
003	6257531	Air deflector
004	6028621	Air diaphragm Ø 79
005	6229838	Gasket for sealed chamber

006	6229837	Gasket for sealed chamber	
007	6318520	Smoke chamber assembly	
008	6317900	Combustion chamber front panel	
009	6318600	Sealed chamber front panel	
010	6318740	Combustion chamber rear insulat	
011	6318710	Combustion chamber side insulat	
012	6318730	Combustion chamber side insulat	
013	6229110	Smoke pressure switch bracket	
014	6225715	Air pressure switch	
015	6225636	Fan	
016	6317700	Sealed chamber front panel	
017	5192208	Gasket for sealed chamber	
018	6174264	Gas/Water heat exchanger	
019	6231362	NTC sensor	
020	6226412	O-ring 3068	
021	6226601	Spring for heat exchanger conne	
022	6264792	C.H. flow pipe	
023	6264855	C.H. return pipe	
024	5198210	Main burner assembly	
025	6235932	Ignition-ionisation electrode	
026	6154402	Main burner nozzle NP 130 natur	MET
026A	6154406	Main burner nozzle NP 0,80	GPL
027	6022004	Copper washer Ø 6	
028	6226958	Pipe conn. gas valve to burner	
029	2030228	Gasket Ø 17x24x2	
030	6243833	Gas valve	
031	6226894	Gas inlet pipe	
032	6305050	Control panel cover	
033	2211010	Terminal strip	
034	6301440	Main PCB	
035	6304791	Panel kit	
036	6317851	Casing	
050	6292521	Right/left rear frame part	
051	6138700	Frame assembly upper support	
052	6116515	D.H.W. tank lower support	
053	6010857	Sealed chamber support.bracket	
054	6010858	Upper protection shield	
055	6318010	Frame assembly lower side	
056	6073323	Casing side panel bracket	
057	5183702	Expansion vessel I.7 - 3/8" M	
058	5194310	Inox D.H.W. cylinder I. 15	
059	6112503	Thermostatic mixing valve	
061	6216017	D.H.W. storage tank outlet pipe	
062	6265017	D.H.W. storage tank flow pipe	
063	6017310	Flexible pipe	
064	2030227	Gasket Ø 12x18x2	
066	6226458	O-Ring diam. 17,96x2,62	
068	2030226	Gasket Ø 10,2x14,8x2	
069	6317047	D.H.W sensor Housing 1/2"x95	
070	6146600	Filling cock Ruval 3/8" MM	
071	6146111	Hydrometer	
072	6226628	Hydrometer Fixing spring	
073	6226464	O-ring 115 diam. 11,91x2,62	
074	6226627	Expansion vassel fixing spring	
075	6319696	C.H. Technyl manifold group	
076	6120533	C.H Nipple	
077	6120534	D.H.W. Nipple exit	
078	6037504	Water pressure switch	
079	6319625	Diverting valve body	
080	6319620	Divertor valve motor	
081	6319603	Discharger cock	
082	6040211	Pressure relief valve 3 bar	
083	6272310	Circulating pump	
084	6226457	O-ring 12bis diam. 16x1,90	
085	6013182	Automatic air vent	
086	6319641	By-pass 2 (new)	
087	6072717	Magnesium anode Ø 16 L=280 1/2"	
088	6226635	Water press.switch fix. spring	
090	6227026	D.H.W. outlet pipe	
091	6227027	D.H.W. outlet-filling pipe	
092	6227028	Inlet pipe for D.H.W.	
700	5199510	Complete control panel	
701	6316252	6 pole connec.CN6 pump+g.v.+fan	
702	6316253	9 pole Stocko connector	
703	6319112	14 pole cable connector	
704	6316278	5 pole cable connector CN7	
705	6127214	Main cable L=1500	

706	6231331	D.H.W. tank sensor
707	5144716	Conversion kit to LPG
708	5198890	Technyl hydraulic group
709	6319699	Split pin kit hydraulic group B
710	6319698	O-ring kit for hydraulic group
711	6281534	Gaskets kit
712	6319695	Murelle-Format-.....o-ring kit
713	6211792	Hydraul. group Bitron caps kit
714	6226638	Divertor valve motor spring cli